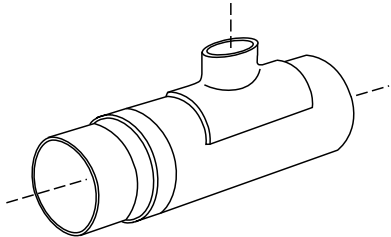


FIBERGLASS PIPE GROUP



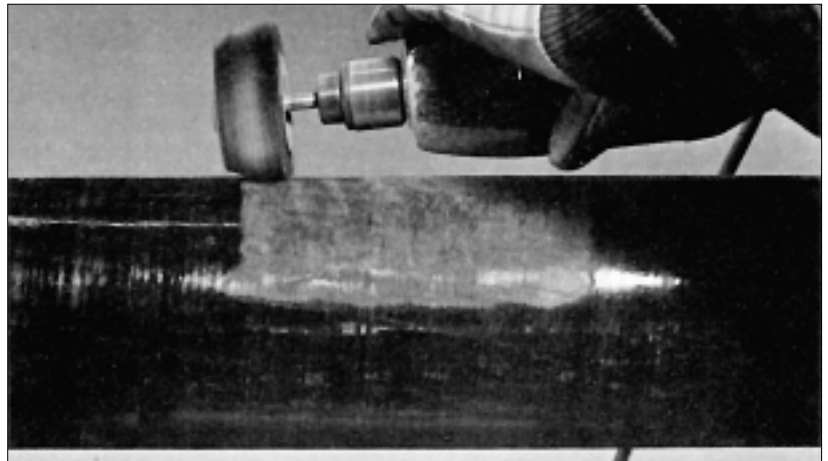
Saddles

for Bondstrand fiberglass piping systems

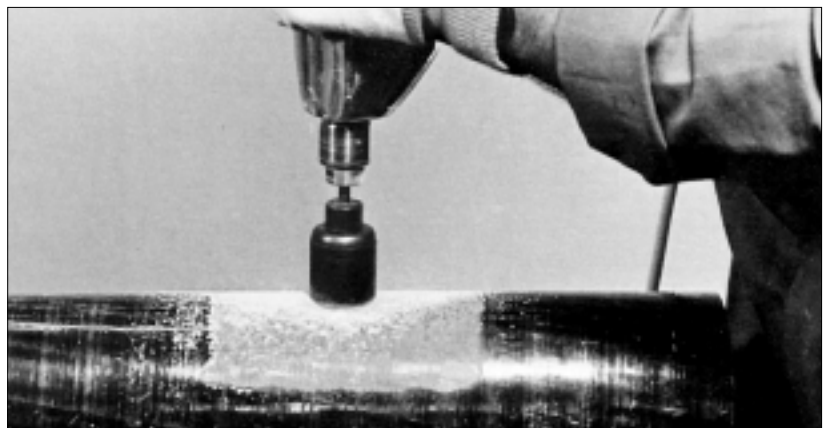
Installation

The following saddle installation procedures should be observed in order to insure maximum performance.

- a. Sand with rough sandpaper or flapper sander all surface gloss from the pipe wall where the saddle is to be bonded.

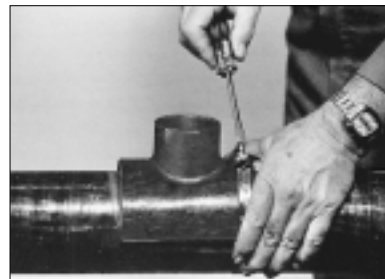


- b. Locate the saddle on the pipe and trace the hole to cut and the saddle's outer perimeter.
- c. Cut a hole of the desired size using a pilot drill and a circular hole saw. A carbide tipped or diamond hole saw is recommended. Do not force the cutter or it will fray the edges of the hole.



Installation

- d. Insure that the bonding surfaces are clean. If the surfaces are oily or greasy, they may be cleaned with additional sanding or solvent (not supplied). It is imperative that all surfaces be clean and dry before applying adhesive.
- e. Mix adhesive according to directions, taking careful notice of the working life, approximately 20 minutes at 75°F.
- f. Apply adhesive to the pipe wall, interior of the saddle and the edges of the pipe wall exposed by the hole.



- g. Align the saddle over the hole and clamp to pipe with two hose clamps.
- h. Tighten the clamps alternately until secure and an adhesive bead surrounds the saddle.
- i. If the temperature is below 40°F, heat assist methods such as the Heat Blanket must be used in order for the adhesive to cure.
- j. Do not pressurize the line until the adhesive has fully cured. Please check individual series product data sheets for saddle pressure ratings. It must be remembered that a pipe system's lowest rated component is the system's controlling pressure capacity. If the required pressure rating for a particular service exceeds the capacity of a saddle, an alternate fitting such as a tee should be installed.

Important Notice

This literature and the information and recommendations it contains are based on data reasonably believed to be reliable. However, such factors as variations in environment, application or installation, changes in operating procedures, or extrapolation of data may cause different results. Ameron makes no representation or warranty, expressed or implied, including warranties of merchantability or fitness for purpose, as to the accuracy, adequacy or completeness of the recommendations or information contained herein. Ameron assumes no liability whatsoever in connection with this literature or the information or recommendations it contains.



FIBERGLASS PIPE GROUP

GROUP HEADQUARTERS

P.O. Box 801148 • Houston, TX 77280 • Tel: (713) 690-7777 • Fax: (713) 690-2842 • <http://www.ameron.com>

Fiberglass Pipe Division Asia

Ameron (Pte) Ltd.
No. 7A, Tuas Avenue 3
Singapore 639407
Tel: 65 861 6118
Fax: 65 862 1302/861 7834

Fiberglass Pipe Division Europe

Ameron B.V.
J.F. Kennedylaan 7
4191 MZ Geldermalsen
The Netherlands
Tel: +31 345 587 587
Fax: +31 345 587 561
Telex: 40257 bonds nl

Fiberglass Pipe Division Americas

P.O. Box 878
Burkburnett, TX 76354
Tel: (940) 569-1471
Fax: (940) 569-2764

Ameron Composites

P.O. Box 71370
11 McBride Street
Newnan, Georgia 30263
Tel: (770) 253-2000
Fax: (770) 253-9234

Fiberglass Pipe Division Centron International

P.O. Box 490
600 FM 1195 South
Mineral Wells, Texas 76068
Tel: (940) 325-1341
Fax: (940) 325-9681